



Morning August 4, 2020 Livestock Report

by Chris Lehner | 312.242.7942 | chris.lehner@admis.com

CATTLE

USDA FEDERAL SLAUGHTER

AUGUST 3, 2020	113,000
WEEK AGO	117,000
YEAR AGO	120,000

=====

	CHOICE	SELECT
BOXED BEEF FINAL	204.66	190.40
CHANGE FROM PRIOR DAY	1.40	0.51
CHOICE/SELECT SPREAD:		14.26
TOTAL LOAD COUNT		104
5 DAY SIMPLE AVERAGE:	202.34	189.86

=====

FINAL AUGUST 3, 2020	CHOICE	SELECT
Primal Rib	339.66	294.22
Primal Chuck	162.15	156.34
Primal Round	167.71	167.23
Primal Loin	278.97	246.86
Primal Brisket	146.64	143.42
Primal Short Plate	138.14	138.14
Primal Flank	122.42	114.48

FINAL JULY 31, 2020	CHOICE	SELECT
Primal Rib	338.16	292.82
Primal Chuck	160.79	155.74
Primal Round	167.04	167.63
Primal Loin	277.31	245.90
Primal Brisket	142.82	143.74
Primal Short Plate	137.06	137.06
Primal Flank	120.68	114.53



LOAD COUNT AND CUTOFF VALUE SUMMARY FOR PRIOR 5 DAYS

Date	Choice	Select	Trim	Grinds	Total	CHOICE 600-900	SELECT 600-900
07/31	52	21	8	18	98	203.26	189.89
07/30	93	22	3	19	137	201.80	191.50
07/29	100	27	16	31	174	201.11	189.49
07/28	64	37	15	9	124	202.96	188.32
07/27	58	19	9	8	94	202.55	190.13
07/24	55	26	10	26	117	201.77	190.63

NATIONAL BOXED BEEF CUTS - NEGOTIATED SALES FOB Plant basis negotiated sales for delivery within 0-21-day period. Prior days sales after 1:30pm are included.
CURRENT VOLUME - (one load equals 40,000 pounds)

Choice Cuts	50.39 loads	2,015,716 pounds
Select Cuts	21.58 loads	863,333 pounds
Trimmings	14.37 loads	574,939 pounds
Ground Beef	17.45 loads	697,975 pounds

USDA BY-PRODUCT DROP VALUE (STEER) FOB CENTRAL U.S.
[HTTPS://WWW.AMS.USDA.GOV/MNREPORTS/NW_LS441.TXT](https://www.ams.usda.gov/mnreports/nw_ls441.txt)

Live cattle futures closed higher on moderate volume trading. August Live Cattle closed at \$103.02 with a week before deliveries. Last week cash cattle in the Midwest were selling from \$102.00 up to \$102.50. Feedlots are going to be asking \$3.00 more in the Midwest this week and \$100 in the Southwest. Feedlots are supported with rising boxed beef and fewer cattle in the Midwest. It is possible packers hold off pricing cattle until later in the week similar to how cattle were priced before the COVID 19 breakout.

Choice boxed beef has been moving up with high end cuts primal rib and loin sections the strength on the cutout. Slaughter at 113,000 is 4000 less than last week and 7000 less than a year ago.

Packers are making solid profits and want to keep lines full. COVID 19 is affecting plants especially in the Southwest.

USDA POSTED CATTLE PRICES ON 8/03/2020
IA/MN – NO CASH SALES DRESSED NO SALES
NE - CASH – NO SALES DRESSED NO SALES
KS – CASH – NO SALES DRESSED: NO SALES



TX/OK/NM – NO SALES
COLORADO – NO SALES

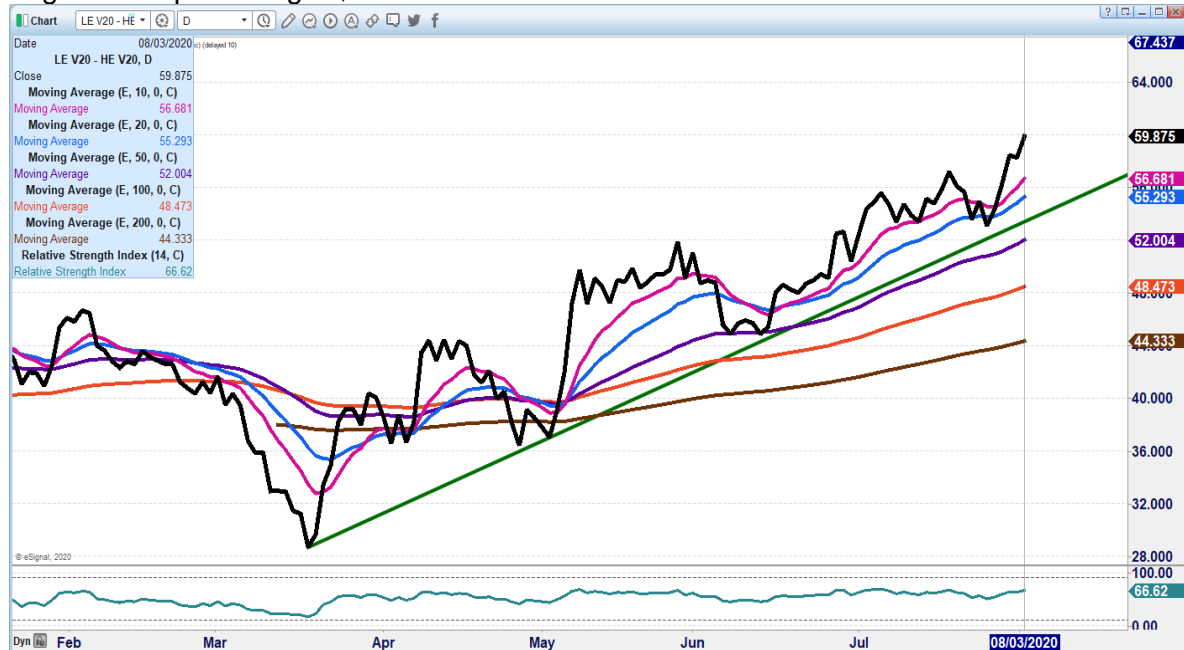
National Daily Direct Cattle July 31, 2020
(5 day accumulated weighted avg)

	Weight	Price	Head
Live Steer:	1443	\$98.94	36,531
Live Heifer:	1299	\$98.13	19,785
Dressed Steer:	922	\$159.57	22,174
Dressed Heifer:	830	\$160.00	6,176

As of July 28th Dressed weights were 878.2 compared to previous week at 878.7. Compared to a year ago weights are up 34 pounds Grading percent was 83.6% compared to previous week at 83.1%.

CHARTS ARE UPDATED ON MORNING REPORTS –

OCTOBER 2020 LIVE CATTLE/OCTOBER 2020 LEAN HOGS – Cattle continue to gain on hogs. Next upside target \$62.75

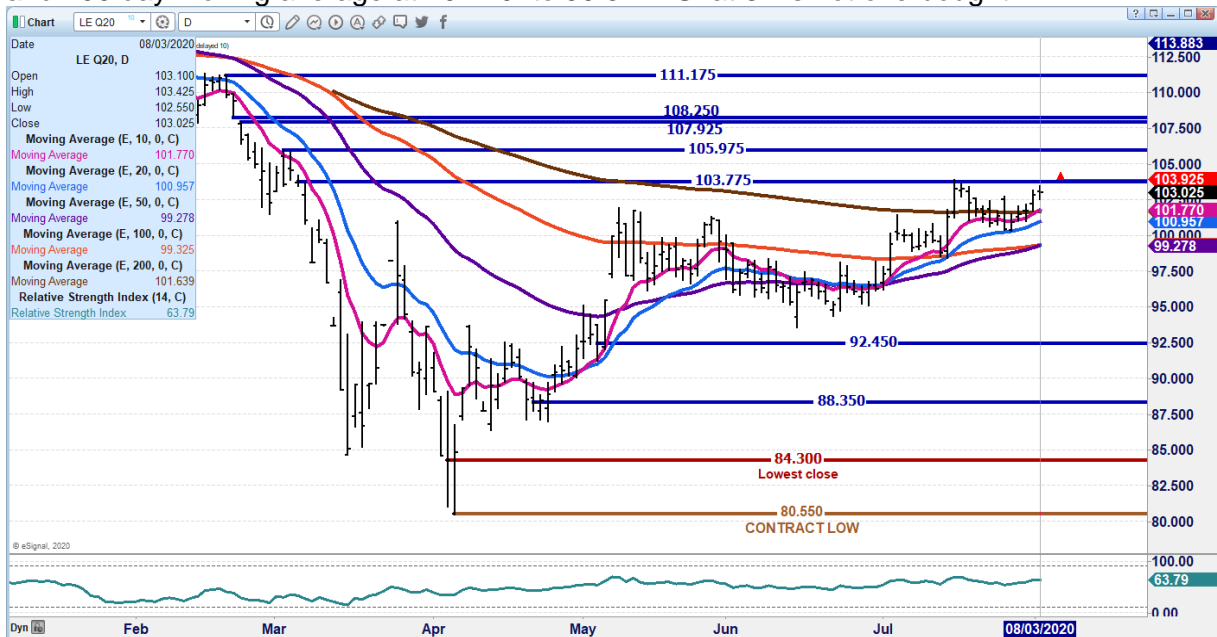




AUGUST 2020 LIVE CATTLE/OCTOBER 2020 LIVE CATTLE – Wide spread giving hedging opportunities

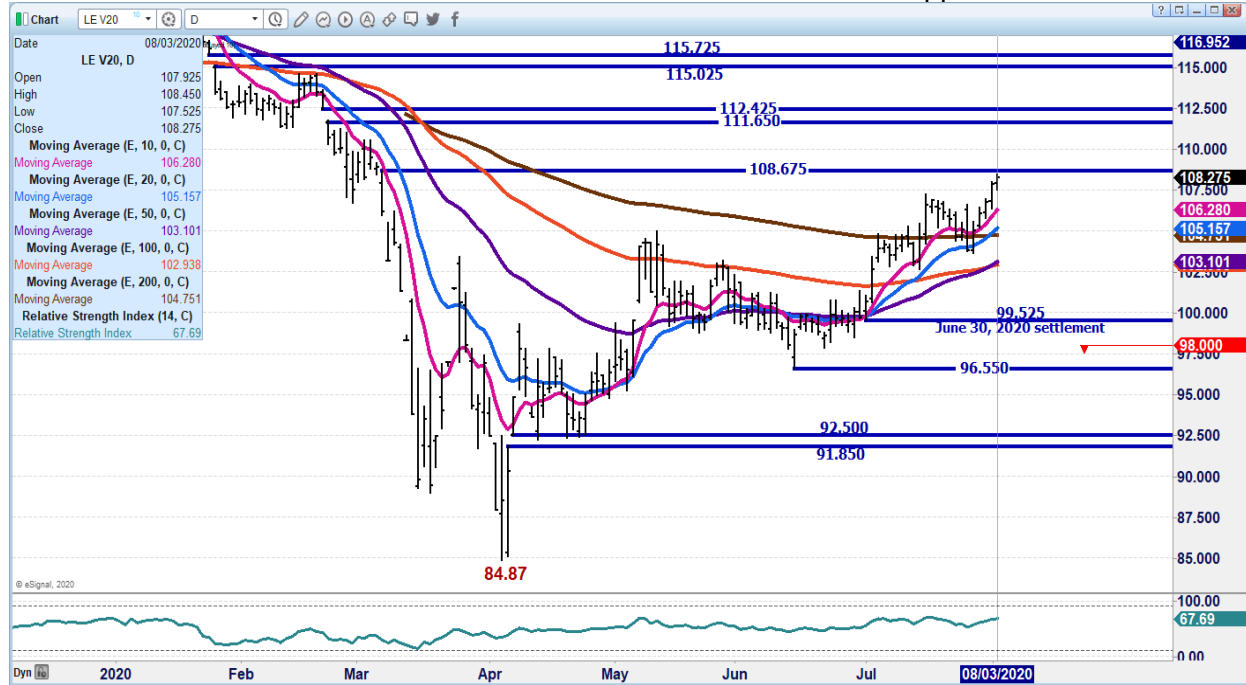


AUGUST 2020 LIVE CATTLE – Resistance 103.77 to 105.97 Support at convergence of 10 and 200 day moving average at 101.70 to 99.37 RSI at 64 is not overbought





OCTOBER 2020 LIVE CATTLE – Resistance is \$108.67 to 111.65 Support is 106.27 to 105.15



Feeder Cattle

THE CME FEEDER INDEX ON 07/30/2020 IS 138.58 DOWN 66 CENTS FROM PREVIOUS DAY -
 AUGUST 2020 FEEDER CATTLE SETTLED AT 144.87 ON AUGUST 3, 2020.

=====

NATIONAL FEEDER & STOCKER CATTLE SUMMARY – WEEK ENDING 07/31/2020

RECEIPTS:	AUCTIONS	DIRECT	VIDEO/INTERNET	TOTAL
THIS WEEK:	136,100	48,500	400	185,000
LAST WEEK:	128,100	79,500	96,600	304,200
YEAR AGO:	148,700	94,200	6,200	249,100

COMPARED TO LAST WEEK, STEERS AND HEIFERS ARE TRADING MOSTLY STEADY TO 4.00 HIGHER. THIS WEEK'S PRICES WERE PRETTY MUCH IN MOST CASES A REPEAT OF LAST WEEK'S MARKET TREND: WITH SOME OF THE MOST ADVANCES CONTINUE

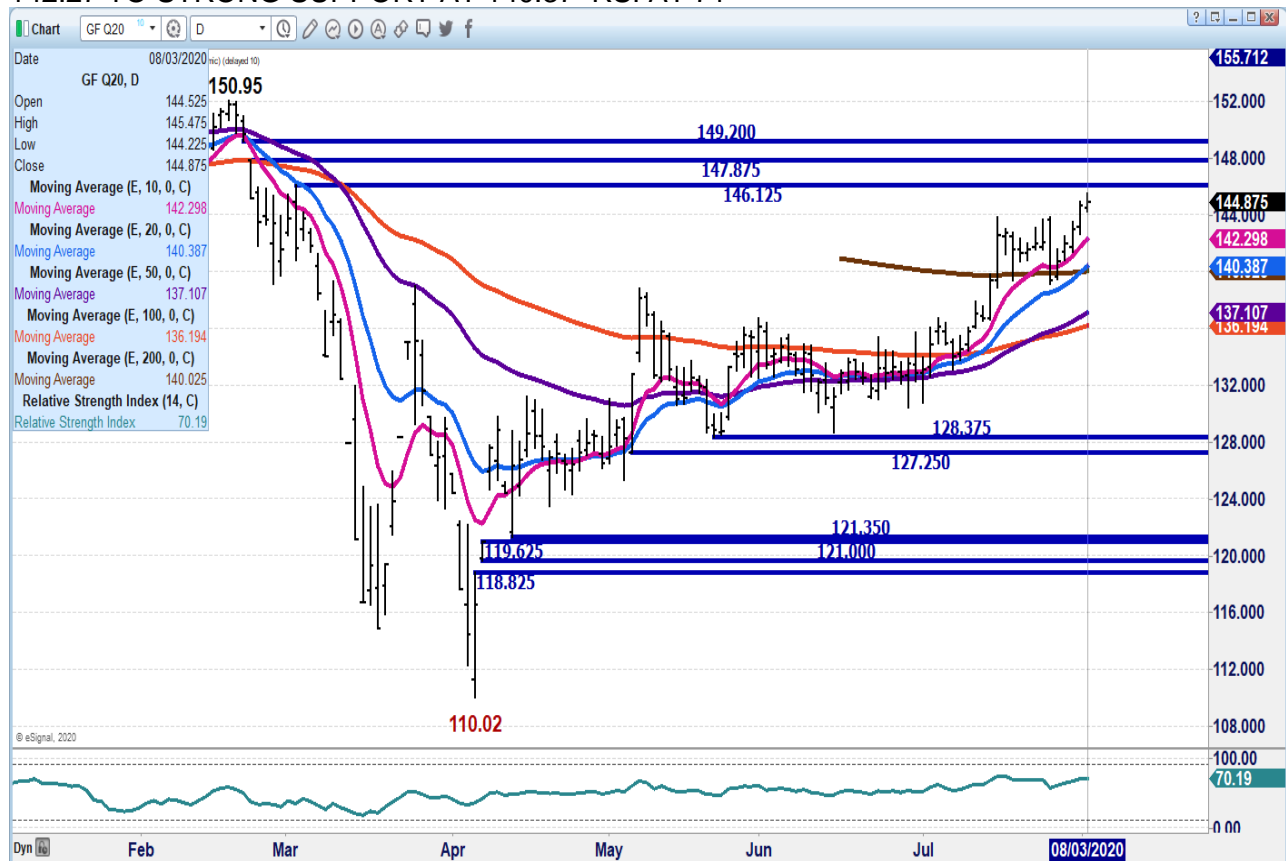


ON THE HEAVY YEARLINGS OVER 800 LBS. HIGH VOLUME SALES AT OK CITY AND EL RENO DID SEE SOME UNEVEN TO LOWER PRICES BUT ON MOSTLY PLAIN TO AVERAGE FEEDERS. SALE BARNs THROUGHOUT THE NORTHERN PLAINS CONTINUE ON THEIR SUMMERTIME SCHEDULES WITH LARGER SALES EVERY OTHER WEEK.

[HTTPS://WWW.AMS.USDA.GOV/MNREPORTS/SJ_LS850.TXT](https://www.ams.usda.gov/mnreports/sj_ls850.txt) FULL REPORT

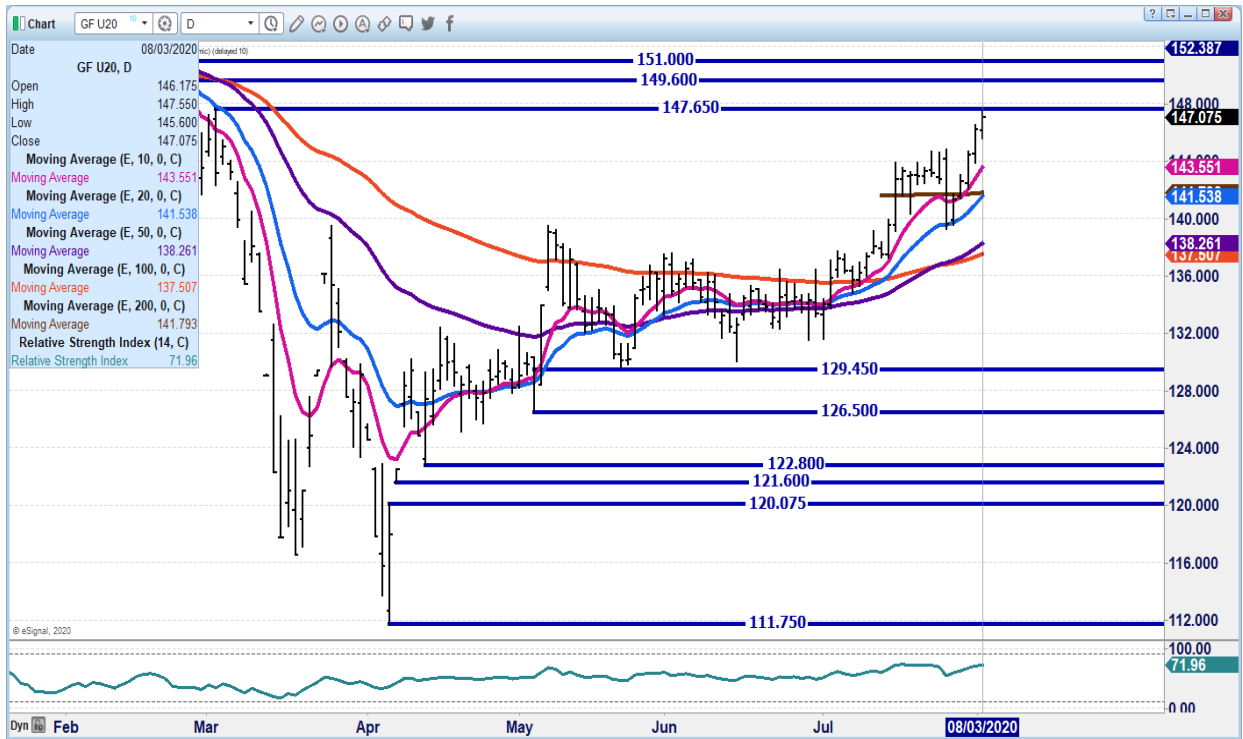
FEEDER CATTLE FUTURES HAVE RALLIED BACK TO MARCH 2ND FEEDLOTS THAT FEED FOR PACKERS OR ON SOME FORM OF CONTRACT NEED TO REPLACE INVENTORY.

AUGUST 2020 FEEDER CATTLE – RESISTANCE IS 146.12 TO 147.85 SUPPORT IS 142.27 TO STRONG SUPPORT AT 140.37 RSI AT 71





**SEPTEMBER 2020 FEEDER - RESISTANCE IS 147.65 TTO 149.60 SUPPORT AT 143.55
COULD SEE SET BACK BECAUSE FAR ABOVE 10 DAY AVERAGE**



LEAN HOGS

USDA ESTIMATED FEDERAL HOG SLAUGHTER

AUGUST 3, 2020	425,000
WEEK AGO	455,000
YEAR AGO	425,000

****REVISED SATURDAY HOG SLAUGHTER..177,000 ** PREVIOUS ESTIMATE 231,000
***NEW WEEK TO DATE..2,538,000 *** PREVIOUS ESTIMATE 2,589,000**

=====
August 2020 Lean Hogs settled at 49.87

CME CASH HOG INDEX 07/30/2020 AT 53.52 DOWN 4 CENTS FROM PREVIOUS DAY.



CME CASH PORK CUTOUT INDEX 07/31/2020 AT 68.21 DOWN 1.08 DOWN FROM PREVIOUS DAY.

CME CASH FRESH BACON INDEX ON 7/31/2020 WAS 128.62 COMPARED TO 7/24/2020 WAS 130.93

=====
 Pork cutout starting Monday morning with big move higher but on light volume. By the afternoon the cutout was up 1.47, \$6.09 off the morning sales. Hams reversed from being higher in the morning and by the end of the day were down \$8.01 and bellies although up 8.68 for the day were down \$16.19 from early sales.

=====
 Need to watch hams. Hams could be an indicator of strength or weakness in exports.

=====
AUGUST 3, 2020 USDA MARKET NEWS

Based on negotiated prices and volume of pork cuts delivered within 14 days and on average industry cutting yields. Calculations for 215 lb Pork Carcass. 55-56% lean, 0.55"-0.70" BF Last Rib

NATIONAL DAILY PORK REPORT FOB PLANT - NEGOTIATED SALES FINAL

LOADS OF PORK CUTS: 349.29

LOADS TRIM/PROCESSED PORK : 43.81

FINAL AFTERNOON

Date	Loads	Carcass	Loin	Butt	Pic	Rib	Ham	Belly
08/03/2020	393.09	66.78	71.06	69.04	54.16	119.40	40.63	105.46
CHANGE :		1.47	3.60	1.28	5.84	5.28	-8.01	8.68
Five Day Average --		67.40	68.45	69.31	49.27	116.30	53.95	97.44

NOON

Date	Loads	Carcass	Loin	Butt	Pic	Rib	Ham	Belly
08/03/2020	179.99	72.87	72.48	67.35	54.37	120.09	53.59	121.65
CHANGE :		7.56	5.02	-0.41	6.05	5.97	4.95	24.87
Five Day Average --		68.61	68.73	68.97	49.31	116.44	56.55	100.68

=====
NATIONAL DAILY DIRECT HOG PRIOR DAY REPORT - SLAUGHTERED SWINE

Slaughter Data for JULY 29, 2020

Average carcass weight - Due to Packer submission problems, release of report is delayed.

Average live weight - n/a

https://www.ams.usda.gov/mnreports/ams_2511.pdf



**DAILY DIRECT HOGS PLANT DELIVERED AS OF 1:30 PM AUGUST 3, 2020
NATIONAL NEGOTIATED PURCHASE BASE CARCASS PRICES**

Carcass Base Price: \$36.00 - \$41.27
 Weighted Average: \$40.28
 Change from Prior Day: 0.66 lower
 HOGS SOLD: 6,053

SWINE OR PORK MARKET FORMULA PURCHASE (Including Packer Sold)

PRICE RANGE: \$38.34 - \$62.84
 Weighted Average \$51.35 PREVIOUS DAY \$51.30
 HOGS SOLD: 156,470

NATIONAL NEGOTIATED LIVE HOG PURCHASE PRICE

PRICE RANGE: \$27.80 - \$40.00
 Weighted Average: \$34.13,
 Change from Prior Day: no comparison
 Hogs sold: 2,155

https://www.ams.usda.gov/mnreports/lm_hg203.txt

AUG 2020 LEAN HOGS – Support is 47.52 the low contract close to 45.80 Resistance is 52.07



ADMIS.com | 312.242.7000 | Chicago | New York | London | Hong Kong | Singapore | Taipei | Shanghai



OCTOBER 2020 LEAN HOGS - Support is 47.00 to 45.85 Resistance is 49.60 with SCO above 51.37



CHARTS FROM ESIGNAL INTERACTIVE, INC.

Chris.Lehner@admis.com

312 242 7942

913.787.6804